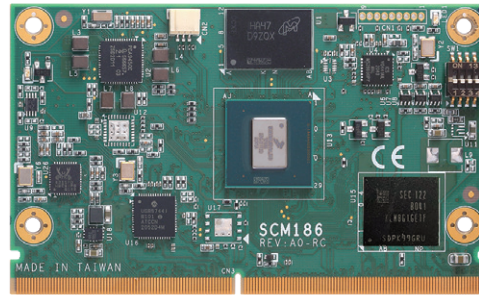


SCM186 NEW

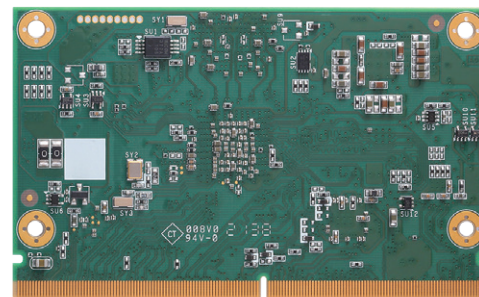
RISC Embedded SMARC v2.0 SoM with i.MX 8M Plus Quad 1.8 GHz SoC, 4GB RAM, and 8GB eMMC

Features

- SMARC 2.0 (82 x 50 mm)
- NXP i.MX 8M Plus Quad A53 Core processor
- AI Accelerator, up to 2.3 TOPS
- LPDDR4 4GB
- 8GB eMMC
- HDMI 2.0 up to 4K
- Dual-channel LVDS
- 10/100/1000 Mbps Ethernet
- USB 3.2 Gen1
- MIPI-CSI
- Audio



▲ Top view



▲ Rear view

Core System

CPU	NXP i.MX 8M Plus 1.8GHz SoC with Quad A53
System Memory	LPDDR4 4GB
AI Accelerator	NPU, up to 2.3 TOPS
Operating System	Linux Kernel 5.10.35
Storage	1 x SDIO3.0 interface 1 x 8GB eMMC
RTC	Battery on the baseboard is required
Power Requirement	+5V
Dimensions	82 x 50 mm
Board Thickness	1.2 mm ± 0.1 mm
Operating Temperature	0°C to +70°C (-32°F to +158°F)

I/O

Graphics	Dual channel LVDS 1 x HDMI 2.0
Ethernet	1 x 10/100/1000 Mbps Ethernet
USB	2 x USB 3.2 Gen1 2 x USB 2.0
COM	2 x UART with TX/RX 1 x UART TX/RX (for debug console)
I ² C	3 x I ² C interface
SPI	1 x SPI
CANbus	2 x CANbus
GPIO	12 x GPIO
OTG	1 x USB 2.0 OTG Client
Audio	1 x I ² S
Camera Input	1 x CSI 4-lane 1 x CSI 2-lane
Security	1 x TPM2.0 (Option, none in default)
Storage	1 x SD card slot
PCIe	1 x PCIe Gen2

Ordering Information

Standard

SCM186-M	SMARC 2.0, NXP i.MX 8M Plus SoC Quad A53 with 4GB RAM, 8GB eMMC, HDMI, LVDS, LAN, and USB
----------	---

* Specifications and certifications may vary based on different requirements.