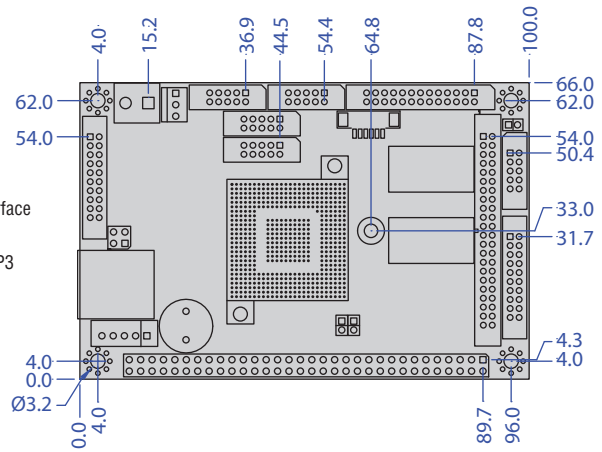
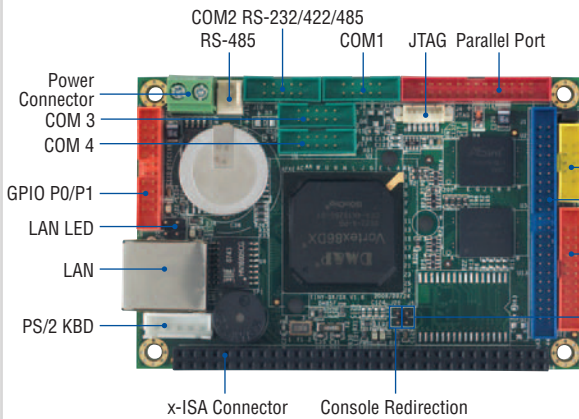


VDX-6315RD

256MB/4S/2USB/LAN/2GPIO/PWMx24



Unit: mm

Specifications

SoC	DM&P SoC CPU Vortex86DX- 800MHz Real Time Clock with Lithium Battery Backup
Cache	L1:16K I-Cache, 16K D-Cache L2 Cache 128KB
Bus	16-bit x-ISA interface
BIOS	AMI BIOS
System Memory	256/512MB DDR2 Onboard
Watchdog Timer	Software programmable from 30.5µ sec.to 512 sec. x 2 sets (Watchdog 1 fully compatible with M6117D)
LAN	Integrated 10/100Mbps Ethernet
Flash Disk Support	Onboard 4MB SPI Flash Disk MSTI EmbedDisk Module (16MB and above) 44-pin IDE to Micro SD (Optional)
PWM	24~32 Channels
SRAM support	512KB (Optional)
I/O Interface	Enhanced IDE port (UltraDMA-100/66/33) x1 RS-232 port x3 RS-232/422/485 port x1 USB port (Ver2.0) x2 Parallel port x1 16-bit GPIO port x2 10/100Mbps Ethernet port x1
Connectors	2.0mm 44-pin box header for IDE x1 2.0mm 26-pin box header for Printer x1 2.0mm 20-pin box header for 16-bit GPIO x2 2.0mm 10-pin box header for USB x1 2.0mm 10-pin box header for RS-232 x4 2.0mm 8-pin header for Ethernet x1 (Optional) 2.0mm 2-pin header for Reset x1 2.0mm 2-pin header for Console redirection x1 2.54mm 5-pin box header for Keyboard x1 2.54mm 3-pin header for RS-485 x1 2.54mm 2-pin header for LINK LED x1 2.54mm 2-pin header for TX/RX LED x1 1.25mm 6-pin wafer for JTAG x1 External RJ-45 connector for Ethernet x1
Power Requirement	Single Voltage +5V @ 400mA

Weight	63g
Board Size	100 x 66mm (3.94 x 2.6 inches)
Operating Temperature	-20 °C ~ +70 °C -40 °C ~ +85 °C (Optional)

Packing List

- VDX-6315RD x1
- CD for User's Manual & Driver x1
- Cable
 - HDD 44P (2.0) x1
 - PRINT (2.0) x1
 - RS-232 (2.0) x4
 - USB (2.0) x1
 - GPIO (2.0) x2
 - PS2 KB White x1

Ordering information

- **VDX-6315RD** Vortex86DX Tiny CPU Module with 256MB DDR2
- **VDX-6315RD-512** Vortex86DX Tiny CPU Module with 512MB DDR2
- **ICOP-2720** Tiny VGA/LCD Development Kit

1

µProcessor Module

2

Tiny Module

3

PC/104 CPU module

4

Hall-Size CPU module

5

3.5" CPU module

6

Peripheral Module

7

Display Product Series

8

Accessories & Technical Information