

conga-IA3 Quick Start Guide

ESD Precautions:



All congatec AG products are electrostatic sensitive devices and are packaged accordingly. Do not open or handle a congatec AG product except at an electrostatic-free workstation. Additionally, do not ship or store congatec AG products near strong electrostatic, electromagnetic, magnetic, or radioactive fields unless the device is contained within its original manufacturer's packaging. Be aware that failure to comply with these guidelines will void the congatec AG Limited Warranty.

Variants:

Order No.	Description
052300	Thin Mini ITX with Intel® Atom™ E3845, quad core, 1.91 GHz, 2MB L2 cache and 1333MT/s dual channel DDR3L memory interface
052301	Thin Mini ITX with Intel® Atom™ E3826, dual core, 1.46 GHz, 1MB L2 cache and 1066MT/s dual channel DDR3L memory interface
052310	Thin Mini ITX with Intel® Celeron™ J1900, quad core, 2.0 GHz, 2MB L2 cache and 1333MT/s dual channel DDR3L memory interface
052311	Thin Mini ITX with Intel® Celeron™ N2930, quad core, 1.83 GHz, 2MB L2 cache and 1333MT/s dual channel DDR3L memory interface

Supported Memory:

- Dual Channel DDR3L modules, up to 1333 MT/s
- Memory size: Up to 16 GByte maximum. Size 2, 4 or 8 GByte per module
- Unbuffered 1.35V memory modules without ECC

Order No.	Description
668755	DDR3L-SODIMM-1600 Memory Module (2 GB)
668756	DDR3L-SODIMM-1600 Memory Module (4 GB)
668757	DDR3L-SODIMM-1600 Memory Module (8 GB)

Cooling Installation:

congatec offers a retention frame and a passive cooling for conga-IA3.

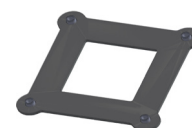
The retention frame acts as a mounting backplate and also as board reinforcement to prevent PCB deformation. Do not remove the insulation foil of the retention frame. This could damage the board.

Assembly Instruction:

- Place retention frame on the bottom side of the board with insulating foil facing the PCB & standoffs inserted to mounting holes in PCB.
- Remove the protection pull tab foil of the cooling solution from the phase changer and carefully place the cooling on the CPU.
- Insert assembling screws.
- Slightly tighten each of the 4 screws so that they hold the cooling solution in place. To do so, start with one screw and then slightly tighten the other screws in a crossover pattern. All the while keep holding the cooling solution straight with one hand.
- Now you can fully tighten the screws. Once again start with one and then continue to tighten the other screws in a crossover pattern. All the while keep holding the cooling solution straight with one hand.

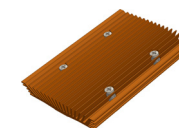
Recommended torque for the screws: 0.6 NM

PN: 052355



Retention Frame

PN: 052351



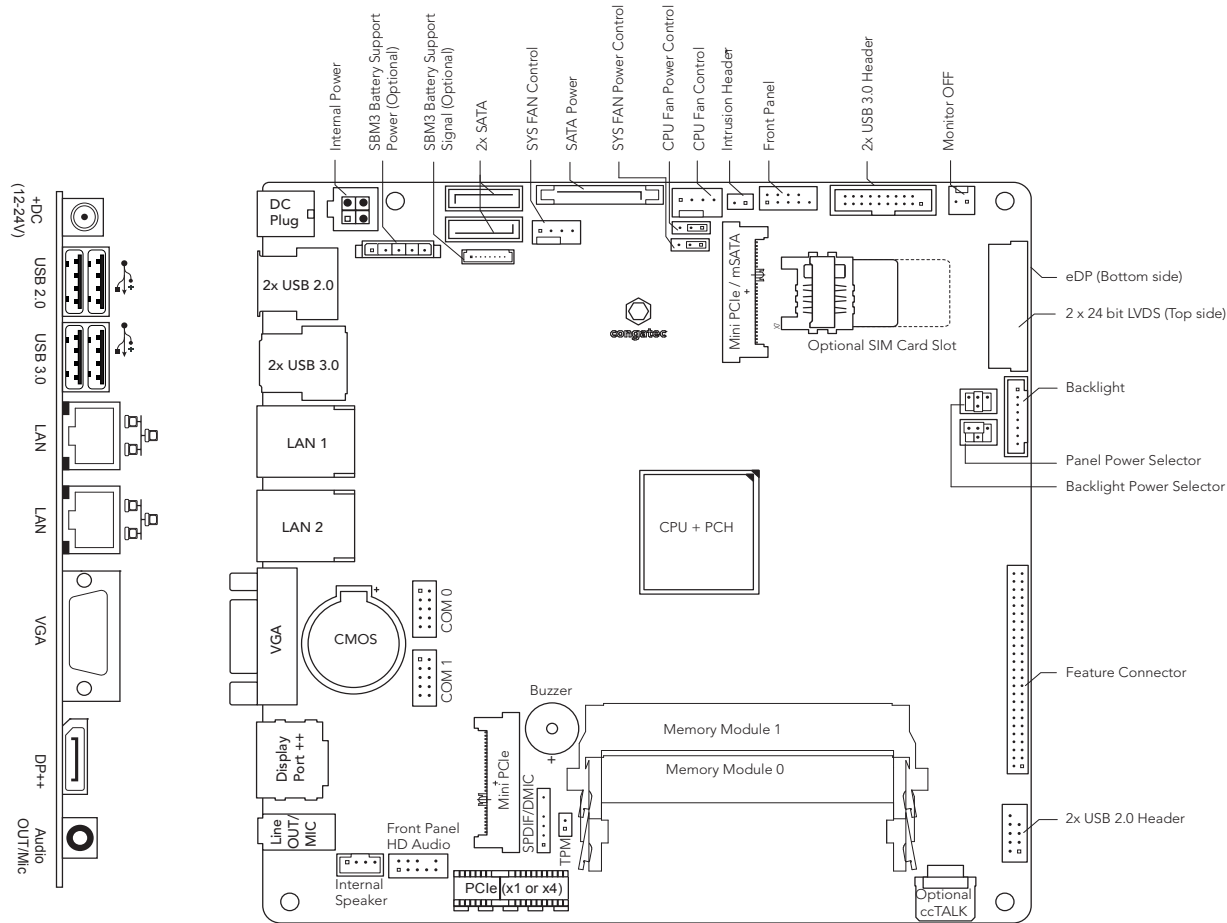
Passive Cooling

Documentation and Drivers:

You can find the complete documentation, as well as all drivers, online at

www.congatec.com

Registration is required. Contact your local congatec sales representative if you require assistance.



Panel Power Settings



LVDS BL Power Settings



CPU Fan Control



System Fan Control



Monitor OFF Control



Case Open Intrusion



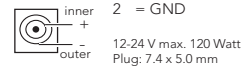
TPM Physical Presence



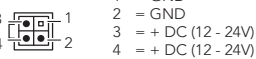
BIOS Boot Config.



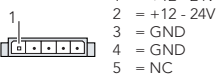
DC Plug



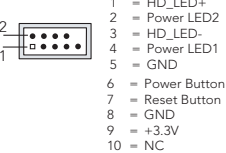
Power



SBM3 Power



Front Panel



CPU & System (Chassis) Fan

